



FPT/GPT PCB REPLACEMENT KIT MANUAL



TRACON® **MODEL FPT-130**

SINGLE-POINT FREEZE PROTECTION HEAT-TRACE CONTROL

REPLACEMENT KIT



TRACON® **MODEL GPT-130**

SINGLE-POINT HEAT-TRACE CONTROL THERMOSTAT

REPLACEMENT KIT



TRACON® **MODEL GPT-230**

DUAL-POINT HEAT-TRACE CONTROL THERMOSTAT

REPLACEMENT KIT

TABLE OF CONTENTS

Items Included.....	2
Installation of FPT130 board kit.....	3
Installation of GPT130 board kit.....	5
Installation of GPT230 board kit.....	7
Ordering & Misc Information.....	9

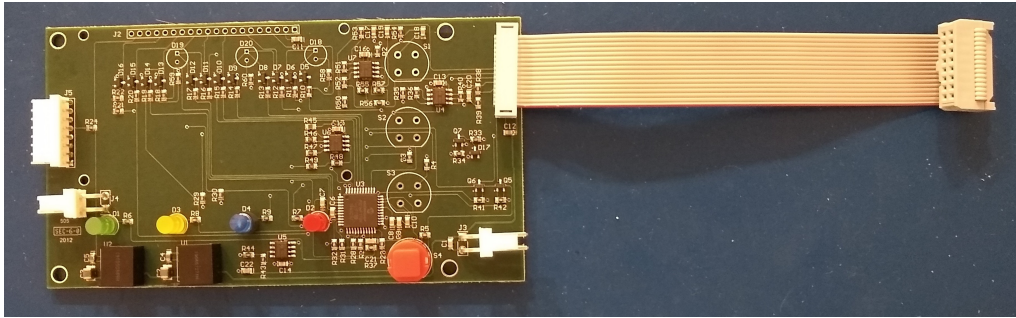
ITEMS INCLUDED

25591 - FPT130 PCB REPLACEMENT KIT		
Contains:		
Qty	P/N	Description
1	25175	PCB ASSY FPT130 CONTROL
1	25132	PCB ASSY GPT RELAY
1"	25570	Tape, Kapton, Heat resistant, 1"wide
4	24563	SCREW,MACH,P-PH-SS,#6-32,0.250L,LCK
4	18019	SCREW, PLASTITE, #6, 1/4"L
1	19249	SCREW, #6 X 0.375", PLASTITE
1	10999	WASHER,STAR,LOCK,SS,EXT.TOOTH,#6
1	25594	MANUAL,FPT/GPT PCB REPLACEMENT KIT
25592 - GPT130 PCB REPLACEMENT KIT		
Contains:		
Qty	P/N	Description
1	25130	PCB ASSY GPT130 CONTROL
1	25132	PCB ASSY GPT RELAY
1"	25570	Tape, Kapton, Heat resistant, 1"wide
4	24563	SCREW,MACH,P-PH-SS,#6-32,0.250L,LCK
4	18019	SCREW, PLASTITE, #6, 1/4"L
1	19249	SCREW, #6 X 0.375", PLASTITE
1	10999	WASHER,STAR,LOCK,SS,EXT.TOOTH,#6
1	25594	MANUAL,FPT/GPT PCB REPLACEMENT KIT
25593 – GPT230 PCB REPLACEMENT KIT		
Contains:		
Qty	P/N	Description
1	25422	TOP PANEL ASSEMBLY, GPT230
2	25132	PCB ASSY GPT RELAY
10	25127	SCREW M SEMS PH SS 6-32 X 1/4
2	14615	TERMINAL,RECEP,FULL INS,.250,22/18
1	25594	MANUAL,FPT/GPT PCB REPLACEMENT KIT

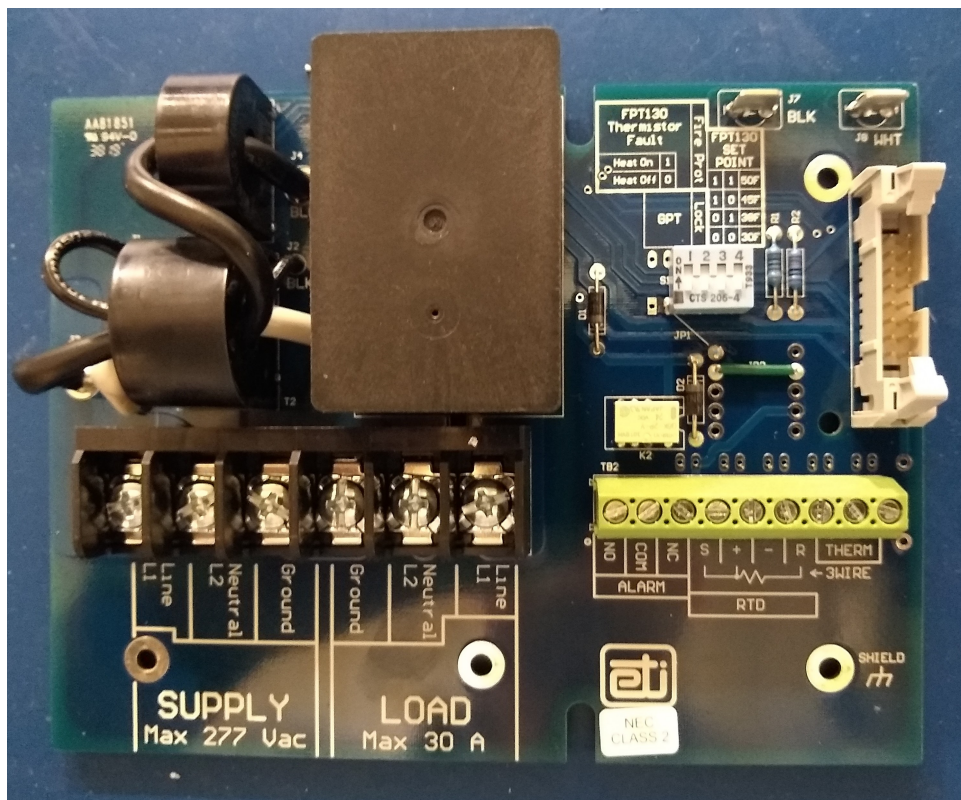
PLEASE NOTE:

GPT/FPT printed circuit boards were completely revised in July 2019. When replacing boards on units purchased prior to July 2019, all boards need to be replaced. The new ones are not backward compatible with the older boards.

INSTALLATION OF FPT130 BOARD SET

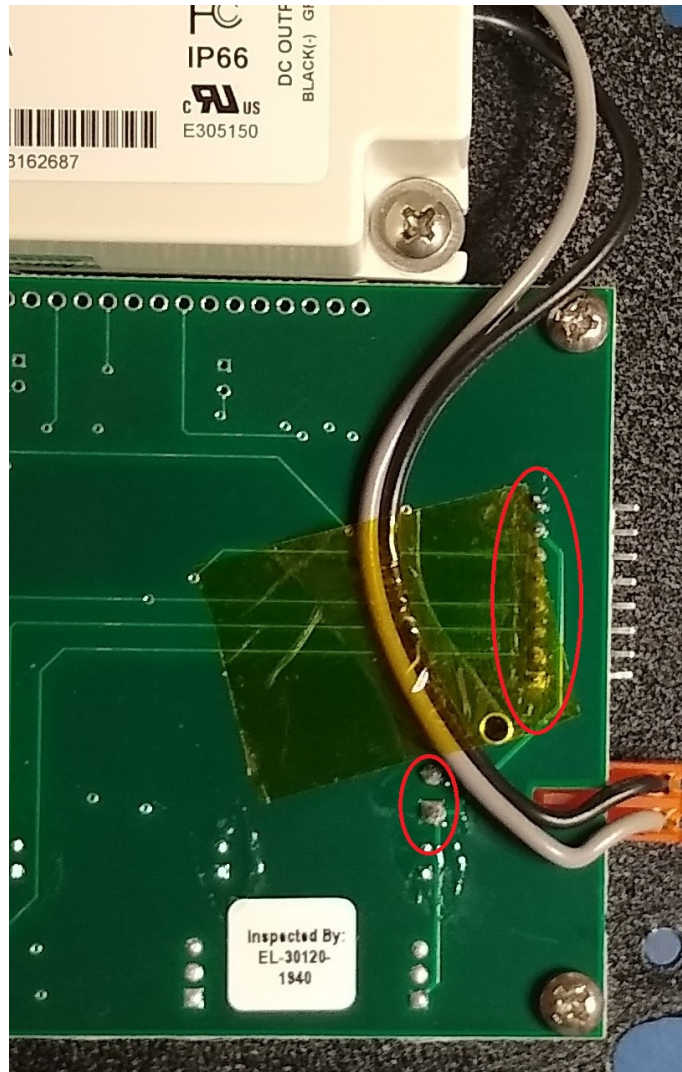


25175 PCB ASSY FPT130 CONTROL BOARD



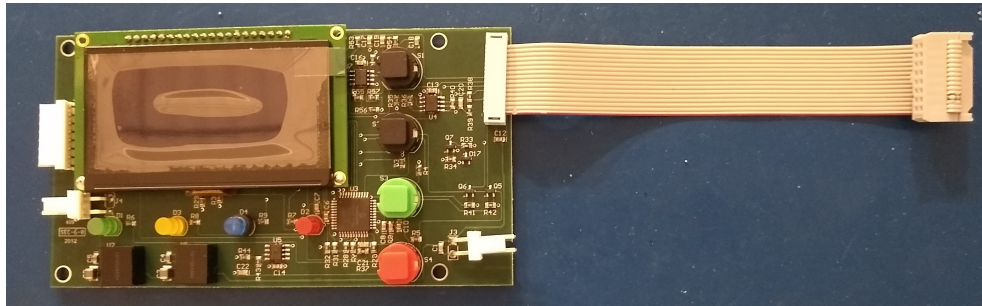
25132 GPT RELAY BOARD

- **REMOVE POWER FROM UNIT BEFORE ATTEMPTING TO REPLACE BOARD SET.**
- Remove the clear plastic cover and front panel from the FPT130 and set the 1/2 plastite screws to one side for later installation.
- Disconnect the ribbon cable from the old GPT RELAY BOARD.
- Remove the screw holding the grounding strap from the front panel and set aside.
- Remove the remaining four mounting screws (#6, 1/4" plastite screws) and set aside.
- Remove the old GPT RELAY BOARD and set aside.
- Install the new GPT RELAY BOARD and re-install all mounting screws.
- Re-install the screw holding the grounding strap from the front panel.

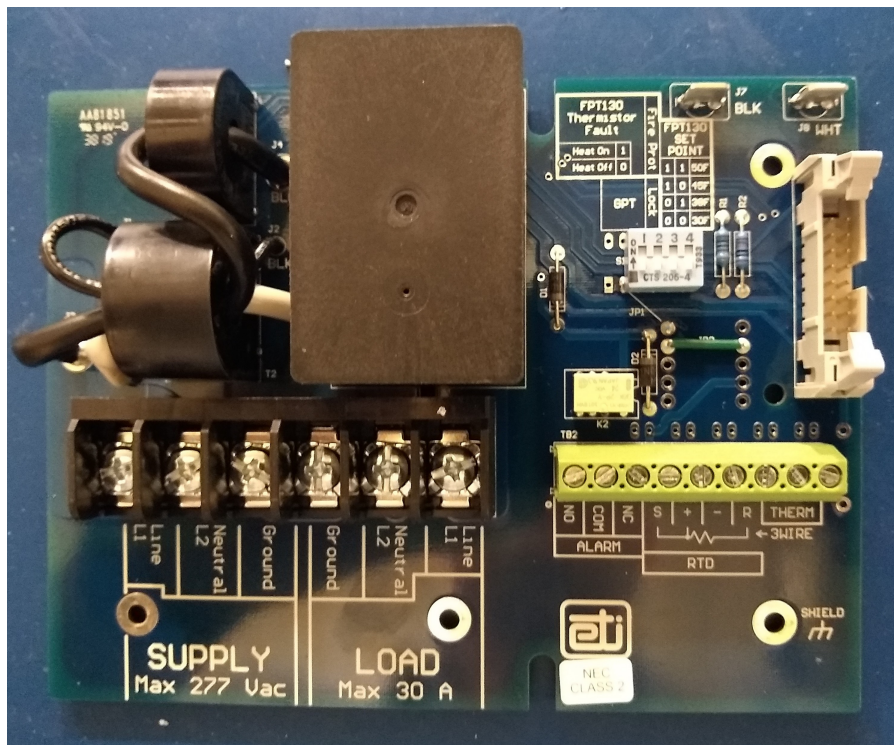


- Remove old control board by removing the four mounting screws, power supply connector and disconnecting the ribbon cable from the GPT RELAY BOARD.
- Install the new control board and install the four mounting screws, hand tight.
- Re-install the power connector.
- Route the power supply wires to avoid projecting pins (circled in red) and secure in place with Kapton tape.
- Re-install the ribbon cable going to the new GPT RELAY BOARD.
- Re-install the front panel using the 3/8 inch plastite screws.
- Re-install the plastic cover using the 1/2 inch plastite screws.

INSTALLATION OF GPT130 BOARD SET

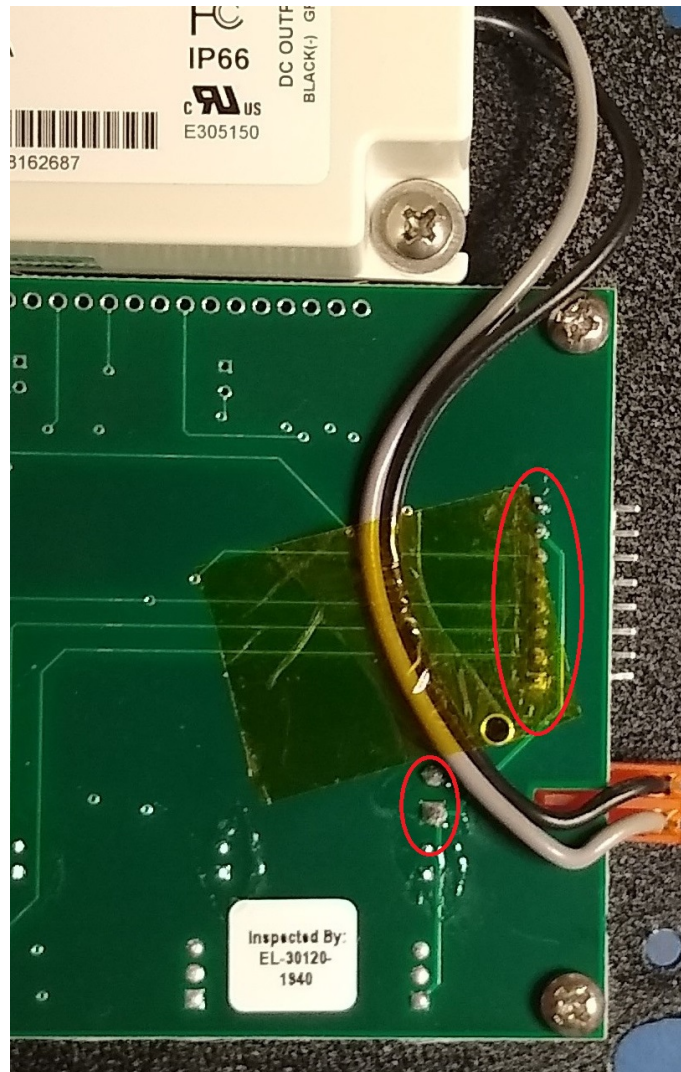


25130 PCB ASSY GPT130 CONTROL BOARD



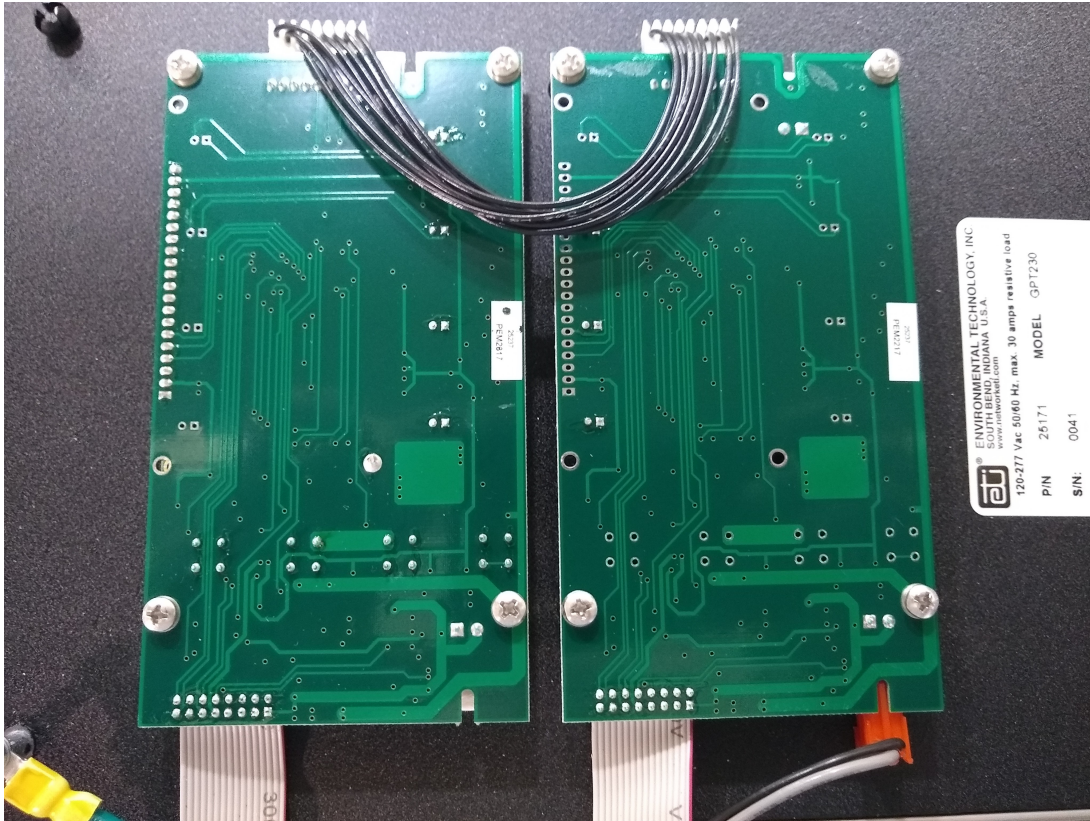
25132 GPT RELAY BOARD

- **REMOVE POWER FROM UNIT BEFORE ATTEMPTING TO REPLACE BOARD SET.**
- Remove the clear plastic cover and front panel from the GPT130 and set the 1/2 plastite screws to one side for later installation.
- Disconnect the ribbon cable from the GPT RELAY BOARD
- Remove the screw holding the grounding strap from the front panel and set aside.
- Remove the remaining four mounting screws(#6, 1/4" plastite screws)and set aside.
- Remove the old GPT RELAY BOARD and set aside.
- Install the new GPT RELAY BOARD and re-install all mounting screws.
- Re-install the screw holding the grounding strap from the front panel.



- Remove old control board by removing the four mounting screws, power supply connector and disconnecting the ribbon cable from the GPT RELAY BOARD.
- Install the new control board and install the four mounting screws hand tight.
- Re-install the power connector.
- Route the power supply wires to avoid projecting pins (circled in red) and secure in place with Kapton tape.
- Re-install the ribbon cable going to the GPT RELAY BOARD.
- Re-install the front panel using the 3/8 inch plastite screws.
- Re-install the plastic cover using the 1/2 inch plastite screws.

INSTALLATION OF GPT230 BOARD SET



25422 TOP PANEL ASSEMBLY, GPT230

- **REMOVE POWER FROM UNIT BEFORE ATTEMPTING TO REPLACE BOARD SET.**
- Open the GPT230 clear cover and remove the front panel by removing the six plastite screws and set them to one side for later installation.
- Disconnect the two ribbon cables from the old GPT RELAY BOARDS in the bottom of the housing.
- Remove the screw holding the grounding strap from the old front panel and set it aside.
- Remove power connector from the lower front panel board.
- Set aside the old front panel to be returned to ETI or disposal.
- Remove the old GPT RELAY BOARDS by removing the screws circled in red (picture next page) and set the screws aside for later use.
- Remove and set aside the old boards to be returned to ETI or disposal.
- Install the new GPT RELAY BOARDS and re-install all mounting screws hand tight.
- Re-install the screw holding the grounding strap to the front panel.
- Re-connect the two ribbon cables to the GPT RELAY BOARDS
- Re-connect the power connector to the lower front panel board.
- Install the new front panel and close the clear cover.



25132 GPT RELAY BOARDS

ORDERING INFORMATION

Part Number	Description
25591	FPT 130 PCB REPLACEMENT KIT
25592	GPT 130 PCB REPLACEMENT KIT
25593	GPT 230 PCB REPLACEMENT KIT
25594	FPT/GPT PCB REPLACEMENT MANUAL (This Document)

CONTACTING CUSTOMER SERVICE

For assistance, contact Customer Service. Office hours are from 8:00 AM until 5:00 PM ET.

Email: info@networketi.com

Web: networketi.com

Mail: ETI
1850 North Sheridan Street
South Bend, IN 46628

RETURNS AND REPLACEMENT PART PURCHASES

Equipment cannot be returned for credit once it has been installed. ETI will repair or replace faulty equipment under warranty. Prior to removal of equipment for warranty return, please contact ETI Technical Support for troubleshooting assistance.

Before returning a unit to ETI, obtain a Return Merchandise Authorization from our Customer Service Department, available between 8:00 a.m. and 5:00 p.m. Eastern Time. If possible, use the original container and packing materials when packing the unit for shipment. It is important to mark the Return Merchandise Authorization clearly on the outside of the shipping container so that it may be correctly processed upon receipt at ETI, Inc. For more information about replacement parts or for a replacement Data Sheet or Manual, please visit www.networketi.com.

LIMITED WARRANTY

ETI's two year limited warranty covering defects in workmanship and materials applies. Contact Customer Service for complete warranty information.

DISCLAIMER

ETI makes no representations or warranties, either expressed or implied, with respect to the contents of this publication or the products that it describes, and specifically disclaims any implied warranties of merchantability or fitness for any particular purpose. ETI reserves the right to revise this publication, and to make changes and improvements to the products described in this publication, without the obligation of ETI to notify any person or organization of such revisions, changes or improvements.